



# Meet Our Northwest Native Plants



# Douglas Fir



Meet Doug.

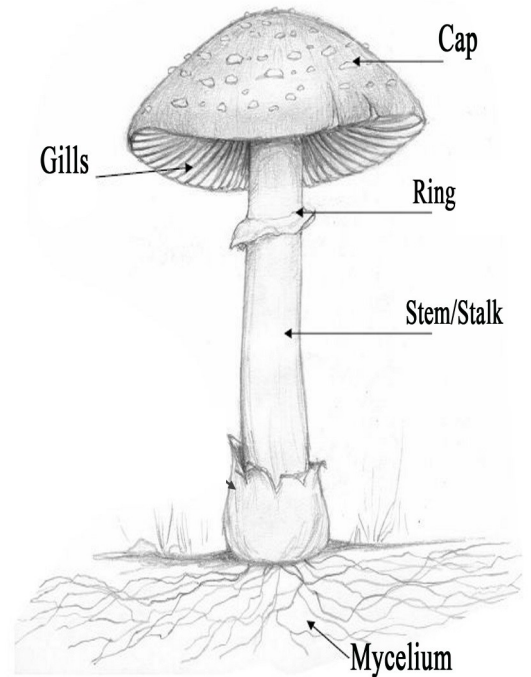
When you see a Douglas Fir, close up you'll see the rough bark. Then look up, up, up! You'll see the branches of pine needles high above you.

You may see pine cones on the ground. Look close and you'll see what looks like mouse tails. Legend says that once there was a great fire, and the mice hid in pine cones to stay safe.

Deer and elk eat young saplings. Chipmunks, squirrels and mice eat the seeds. Owls make nests in these trees. Humans use the wood for building and for making paper.



# Mushrooms



Mushrooms aren't plants, and they aren't animals. They are fungi. When they grow on fallen trees, they help recycle nutrients back into the soil which helps the forest grow.

The mushrooms you find in a grocery store are tasty and are good for your body. But never eat mushrooms you find outside—they may be poisonous and could make you sick.



# Salal



You can recognize Salal by its glossy dark green leaves. New twigs are reddish green, older branches are grayish brown. In the summer, they have small bell-shaped flowers, and in late summer, small round purplish black berries. The berries have been eaten by Native Americans for centuries, fresh, dried or in jams, and have healthful properties. However, there are concerns about toxicity in high doses, so just try a small taste.



# Sword Fern



The fronds of a sword fern may remind you of a feather, and each individual leaf may look like a sword. On the back of the leaves, you'll find spores—these are like seeds for the fern and help new ferns to spread and grow.

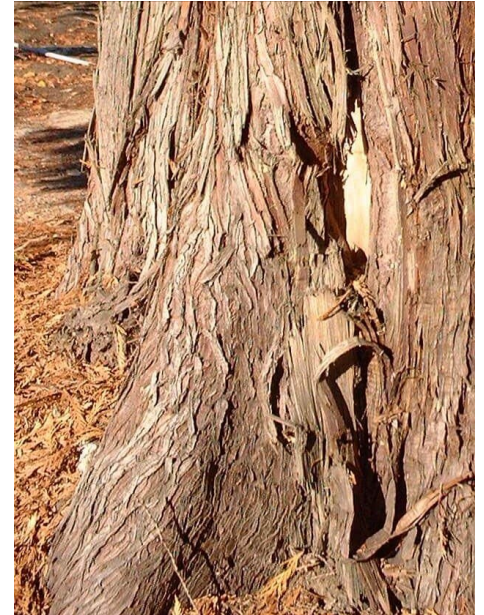


# Western Red Cedar



Red cedar are as tall as a Douglas Fir, but it's easy for you to tell them apart. Cedar bark is soft and peels. The branches are low to the ground with soft flat needles. A red cedar tree can live 1000 years.

Deer eat the needles, birds nest in trees. Native Americans used cedar to build houses and canoes and make clothing. Today, we use it for roofs, fences and boxes.



# Oregon Grape



Oregon Grape leaves are serrated, which means the edges are jagged like the teeth on a saw.

Their stems are reddish. In the spring, they have small yellow flowers. In late summer, they have blue berries that aren't glossy.

The fruit is edible but *very* tart. Some people make jam with the berries and a lot of sugar!

Don't confuse them with holly! It's a non-native plant, and its berries will make you sick.



# Big Leaf Maple



Big leaf maples are also very tall trees. They are not evergreens, so their leaves change color in the fall, and they lose all their leaves in the winter. You can recognize them by their 5 fingered leaves, and helicopter seeds. Maple trees are used for furniture and flooring.



# Blackberries



Blackberries have thorns, white petals in the spring and fruit in late summer.

Blackberries are edible, and really yummy. Just watch out for the thorns!



Trailing Blackberries are native to this region. They have clusters of three leaves and their vines spread out across the ground.



# More Plants to Look For



Indian Plum



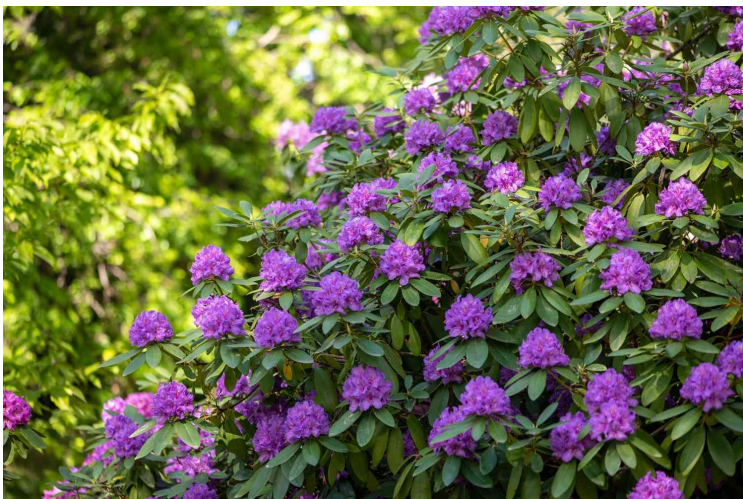
Vinca



Herb Robert ("Stinky Bob")



Madrone



Rhododendron